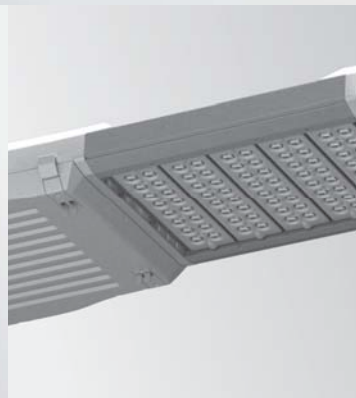


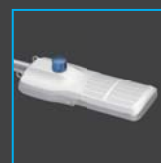
LED LIGHTING SOLUTIONS

STREET LIGHTING

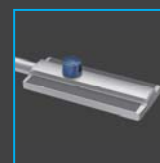


Product Features

- High efficacy (>85~90lm/W) for optimized outdoor lighting requirement
- ON/OFF control with photo sensor for different application demand
- Modularized design in optics, thermal dissipation and electrical components for easy upgrade
- Selections of light distribution and color temperature to fulfill diverse request
- World's number one provider of switching power supplies to support in-house LED driver technology
- Reliable quality, manufacture capability, and global logistics by Delta Group 40-year establishment



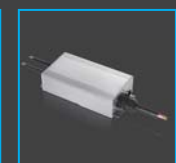
SLDA



SHDA



OHDA



OCDA

STREET LIGHTING

High Lumen Street Lighting

Model	• SLDA09N8K2SE	• SLDA14N122SE	• SLDA20N182SE
Lumen Output (lm)	≥8,100	≥12,600	≥18,000
Input Voltage	120~277VAC, 50/60Hz	120~277VAC, 50/60Hz	120~277VAC, 50/60Hz
Power Consumption (W)	90W±10%	140W±10%	200W±10%
Efficiency (lm/W)	≥90	≥90	≥90
Power Factor	≥0.95	≥0.95	≥0.95
Light Distribution	Type II, Short	Type II, Short	Type II, Short
CRI (Ra)	>70	>70	>70
Dimension (mm)	709 x 313 x 115	877 x 313 x 115	1045 x 313 x 115
IP	IP65	IP65	IP65
Weight (kg)	11	13.5	16.5
CCT (K)	5000K	5000K	5000K

Pathway Lighting

Model	• SHDA04N3K2SE	• SHDA07N5K2SE
Lumen Output (lm)	≥3,150	≥5,850
Input Voltage	110~277VAC, 50/60Hz	110~277VAC, 50/60Hz
Power Consumption (W)	35W±10%	65W±10%
Efficiency (lm/W)	≥90	≥90
Power Factor	≥0.95	≥0.95
Light Distribution	Type II, Short	Type II, Short
CRI (Ra)	>70	>70
Dimension (mm)	394 x 225 x 65	534 x 225 x 65
IP	IP65	IP65
Weight (kg)	4.2	5.6
CCT (K)	5000K	5000K

Solar-LED Lighting

Model	• OHDA03N2K2SE	• OHDA06N4K2SE
Lumen Output (lm)	≥2,600	≥5,100
Input Voltage	DC 11~14V (12V battery system) DC 22~28V (24V battery system)	DC 11~14V (12V battery system) DC 22~28V (24V battery system)
Power Consumption (W)	32W±10% / 26W±10%	64W±10% / 58W±10%
Efficiency (lm/W)	≥85	≥85
Light Distribution	Type II, Short	Type II, Short
CRI (Ra)	>70	>70
Dimension (mm)	394 x 225 x 65	534 x 225 x 65
IP	IP65	IP65
Weight (kg)	4.2	5.6
CCT (K)	5000K	5000K

Solar-LED Lighting Controller

Model	• OCDA1031B
PV Input Voltage	DC 10~40V
Battery Specification	DC 12 / 24V
Maximum charging current	12A
Maximum Output current	7A
Charging Algorithm	2 stages
Lighting Modes	Auto / Schedule
Dimming	DC 0~10V
Communication Interface	RS232
Auto Transfer Switch	Yes
Dimension (mm)	140 x 40 x 80
IP	IP65

* Solar panel and battery are not included and may be offered optionally *